

# Engineered Process Controls, LLC

TEL: 425-844-8901  
FAX: 425-844-8904

[www.engineeredprocess.com](http://www.engineeredprocess.com)

P.O. Box 890  
Woodinville, WA 98072



**Oil & Gas  
Processing & Distribution**



**Mining & Minerals Extraction**



**Power Production**





### Pressure

- MultiVariable Transmitter
- Differential Pressure
- Remote Seals

### Temperature

- Thermocouple, RTD's
- Temperature Transmitter
- Thermo-wells

### Analyzers

- pH / ORP Probes
- Conductivity

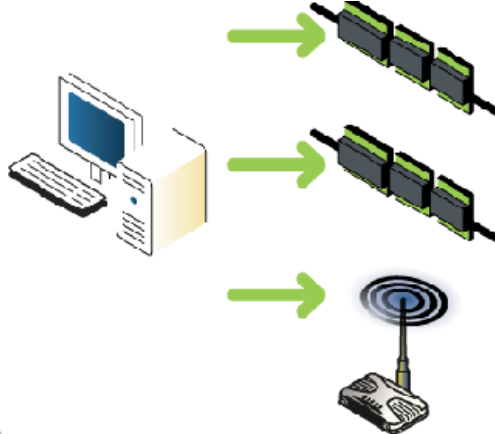
### Flow Meters

- Vortex
- Mass Flow Vortex
- Coriolis / Mass Flow
- DP Flow



### Telemetry

- SCADAPack
- Trio Radios
- CLEAR SCADA
- Smart RTU's & Transmitters
- Well Monitoring & Control
- DNP3 - Secure Authentication



**SCADAPack 300E & ES**  
ClearSCADA Database Objects:  
DNP3 - SCADAPack E

Action: Automatic or manual download of firmware, configuration and application.

**SCADAPack 100, 32, 300**  
ClearSCADA Database Objects:  
SCADAPack Modbus  
SCADAPack Modbus Realfile

Action: Read/Write of controller Modbus registers. Configure Realfile flow computer & read data. Read catalogues.

**Trio**  
ClearSCADA Database Objects:  
Diagnostics

Action: Interrogate each radio in network for diagnostics data



- Micro Coriolis Meters
- Thermal Mass Flow Controllers
- Liquids & Gas
- Dosing/Metering Systems



- Clamp-On Ultrasonic Flow Meters
- Pre-Calibrated
- Immune to Temperature Changes
- Liquids and Gas



- Thermal Mass Flow Meters
- Inline & Insertion Flow Meters
- Thermal Mass Flow Switches





TEL: 425-844-8901  
FAX: 425-844-8904

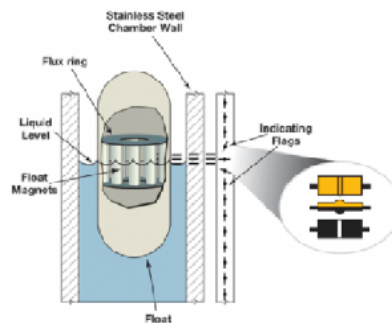
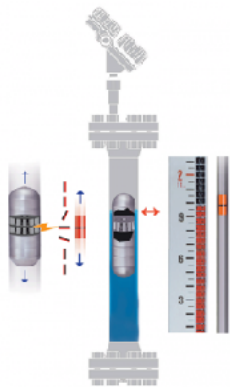
[www.engineeredprocess.com](http://www.engineeredprocess.com)

P.O. Box 890  
Woodinville, WA 98072

## LEVEL



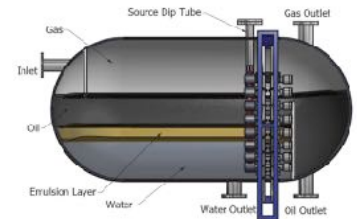
- Magnetic Level Gages & Indicators
- Magnetostrictive Transmitters
- Guided Wave Radar
- Open Path Radar



- Capacitance Level
- Ultrasonic Level
- Level Switches



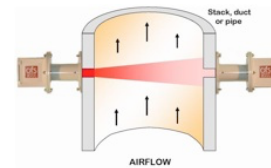
- Nuclear Density Level
- Multi-Density Level Interface
- High Temperature
- Moisture & Interface Measurement



- Electronic Boiler Steam Drum Level Systems
- Mechanical Level Gages
- TWIP, Drip Leg Systems
- Complete Packaged Modular



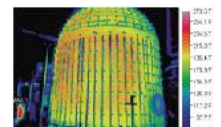
- Optical Flow Meter
- Large Stacks & Ducts
- Flares



- Boiler / Burner Flame Scanners
- Single Scanner/Processor
- UV/IR Flame Scanners
- Digital Processors



- Transformer Dissolved Gas Analyzers
- Critical Vessel Temperature Monitoring
- Non Contact Thermal Imaging



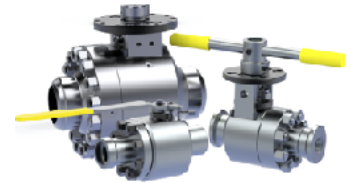
## VALVES & ACTUATORS



- Electric, AC/DC Smart Actuators
- Electro-Hydraulic Actuators
- Multi-Turn, Rotary, Linear Actuators



- Metal Seated Floating Ball Valves
- Power & Critical Service
- Inline Repairable
- Automated Relief Valves
- Sizes: 1/2" - 36"
- Pressure Class: ASME 150 - 4500



- Metal Seated Triple Offset Butterfly Valves
- Custom Face-to-Face & Materials
- Cryogenic & High Temperature



- Slurry & Mining Valves
- Severe Service,
- Abrasives
- Pulp & Paper
- Actuators, Controls, Accessories



- High Performance Butterfly Valves
- Lined M-PTFE, Sanitary, UPW
- Actuators, Controls, Accessories



## ANALYZERS



- Toxic & Flammable Gas Detection
- Open-Path IR LEL Detection
- Controllers, Single & Multichannel



### WATER ANALYZERS

- Dissolved Oxygen
- Silica, Sodium
- Hydrazine, Hardness



- Online Concentration Analyzers
- Digital Optically Based
- Temperature Compensated